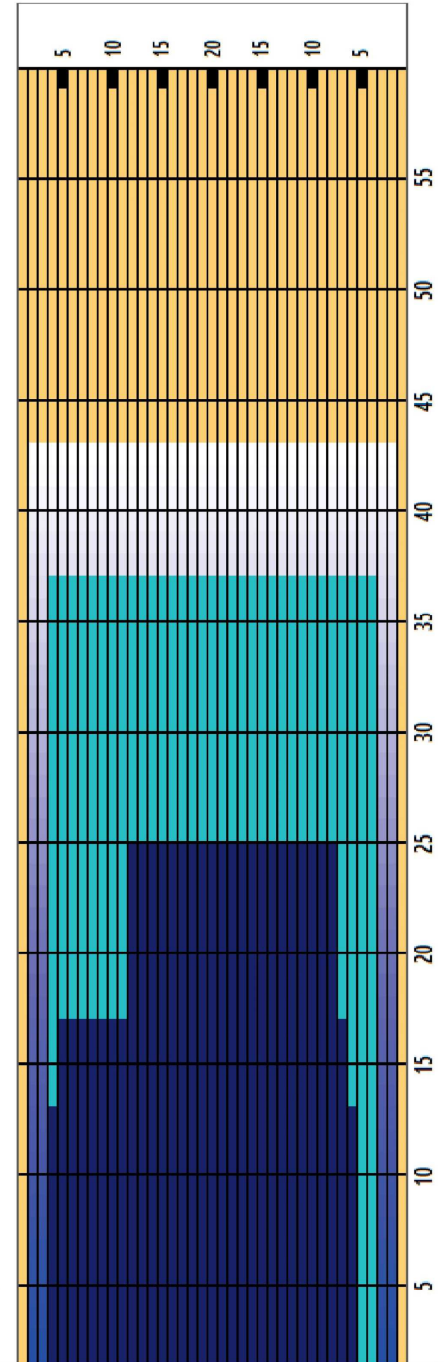


Oil Pattern Distance	43	Reverse Brush Drop	43	Oil Per Board	40 ul
Forward Oil Total	18.64 mL	Reverse Oil Total	9.4 mL	Volume Oil Total	28.04 mL
Tank Configuration	Only B	Tank A Conditioner	ICE	Tank B Conditioner	FIRE

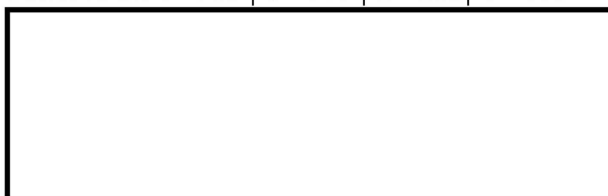
	START	STOP	LOADS	SPEED	BUFFER	CROSSED	START	END	FEET	T.OIL
1	2L	2R	1	18	3	37	0.0	0.0	0.0	1480
2	4L	4R	5	18	3	165	0.0	12.7	12.7	6600
3	4L	4R	8	22	3	264	12.7	37.6	24.9	10560
4	2L	2R	0	26	3	0	37.6	43.0	5.4	0

	START	STOP	LOADS	SPEED	BUFFER	CROSSED	START	END	FEET	T.OIL
1	2L	2R	0	26	3	0	43.0	41.0	-2.0	0
2	2L	2R	0	22	3	0	41.0	25.0	-16.0	0
3	12L	8R	2	14	3	42	25.0	21.1	-3.9	1680
4	12L	8R	2	14	3	42	21.1	17.2	-3.9	1680
5	5L	7R	2	14	3	58	17.2	13.3	-3.9	2320
6	4L	6R	3	14	3	93	13.3	7.4	-5.9	3720
7	2L	2R	0	10	3	0	7.4	0.0	-7.4	0

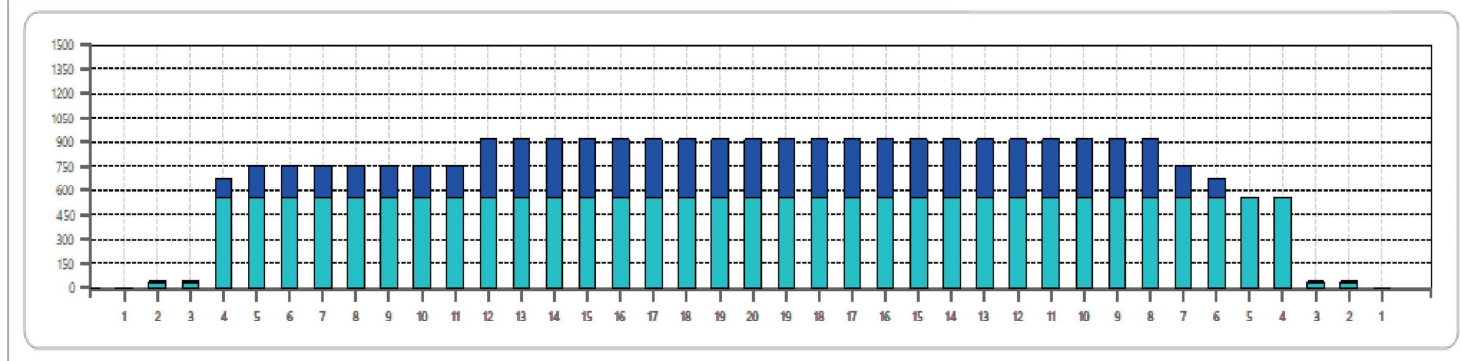


Cleaner Ratio Main Mix NA Forward
 Cleaner Ratio Back End Mix NA Reverse
 Cleaner Ratio Back End Distance NA Combined

Buffer RPM: 4 = 700 | 3 = 500 | 2 = 200 | 1 = 100



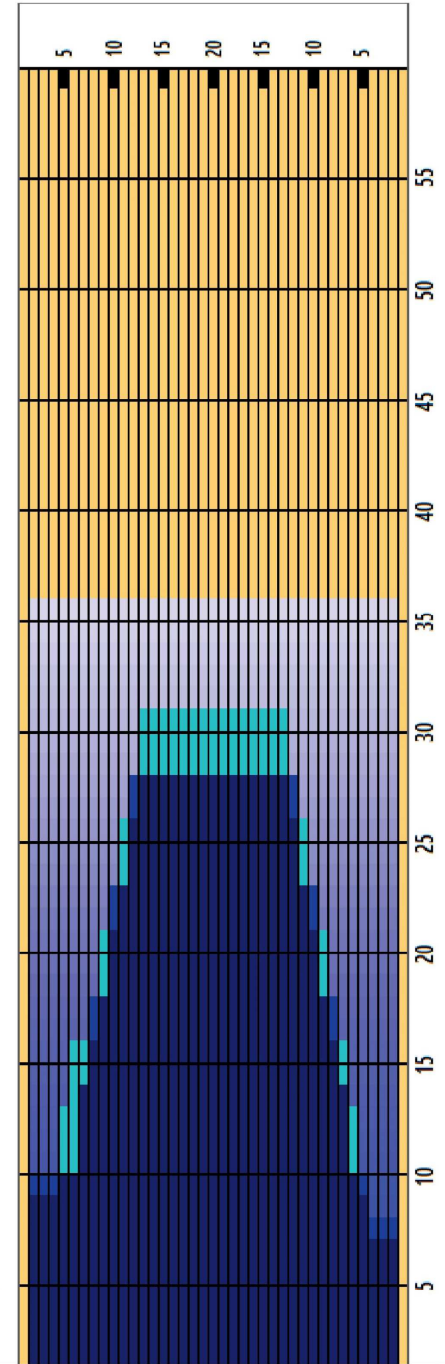
Item	3L-7L:18L-18R	8L-12L:18L-18R	13L-17L:18L-18R	18L-18R:17R-13R	18L-18R:12R-8R	18L-18R:7R-3R
Description	Outside:Middle	Middle:Middle	Inside:Middle	Middle: Inside	Middle:Middle	Middle:Outside
Track Zone Ratio	1.53	1.16	1	1	1	1.77



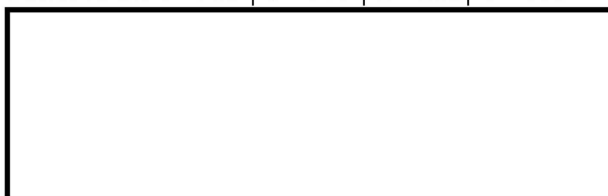
Oil Pattern Distance	36	Reverse Brush Drop	35	Oil Per Board	50 ul
Forward Oil Total	21.05 mL	Reverse Oil Total	12.55 mL	Volume Oil Total	33.6 mL
Tank Configuration	Only B	Tank A Conditioner	ICE	Tank B Conditioner	FIRE

	START	STOP	LOADS	MICS	SPEED	BUFFER	CROSSED	START	END	FEET	T.OIL
1	2L	2R	5	50	14	3	185	0.0	7.9	7.9	9250
2	2L	5R	1	50	14	3	34	7.9	9.8	1.9	1700
3	5L	6R	2	50	14	3	60	9.8	13.7	3.9	3000
4	6L	7R	1	50	18	3	28	13.7	16.2	2.5	1400
5	9L	9R	2	50	18	3	46	16.2	21.3	5.1	2300
6	11L	11R	2	50	18	3	38	21.3	26.4	5.1	1900
7	13L	13R	2	50	18	3	30	26.4	31.5	5.1	1500
8	2L	2R	0	50	22	3	0	31.5	36.0	4.5	0

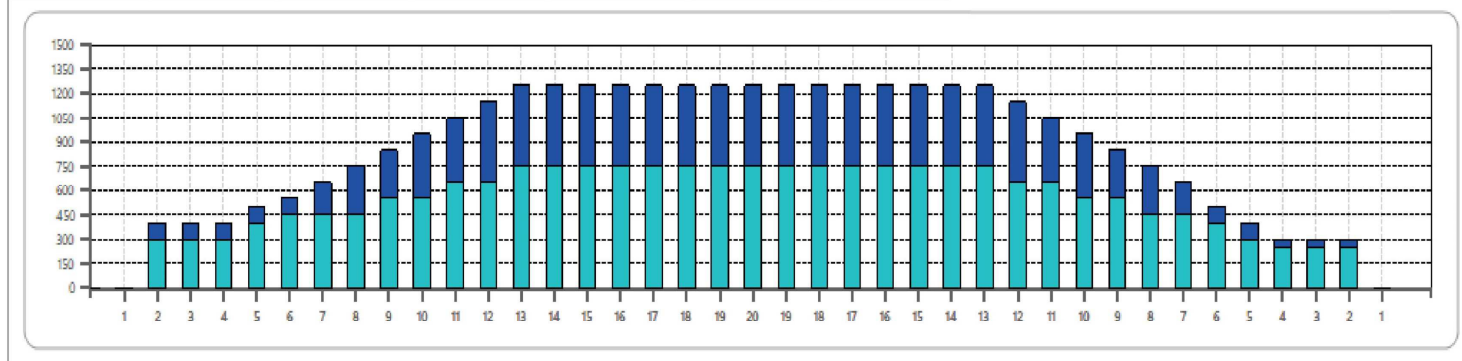
	START	STOP	LOADS	MICS	SPEED	BUFFER	CROSSED	START	END	FEET	T.OIL
1	2L	2R	0	50	30	3	0	36.0	28.0	-8.0	0
2	12L	12R	2	50	18	3	34	28.0	22.9	-5.1	1700
3	10L	10R	2	50	18	3	42	22.9	17.8	-5.1	2100
4	8L	8R	2	50	14	3	50	17.8	13.9	-3.9	2500
5	7L	7R	2	50	14	3	54	13.9	10.0	-3.9	2700
6	2L	5R	1	50	14	3	34	10.0	8.1	-1.9	1700
7	2L	2R	1	50	14	3	37	8.1	6.2	-1.9	1850
8	2L	2R	0	50	10	3	0	6.2	0.0	-6.2	0



Cleaner Ratio Main Mix NA Forward
 Cleaner Ratio Back End Mix NA Reverse
 Cleaner Ratio Back End Distance NA Combined
 Buffer RPM: 4 = 700 | 3 = 500 | 2 = 200 | 1 = 100



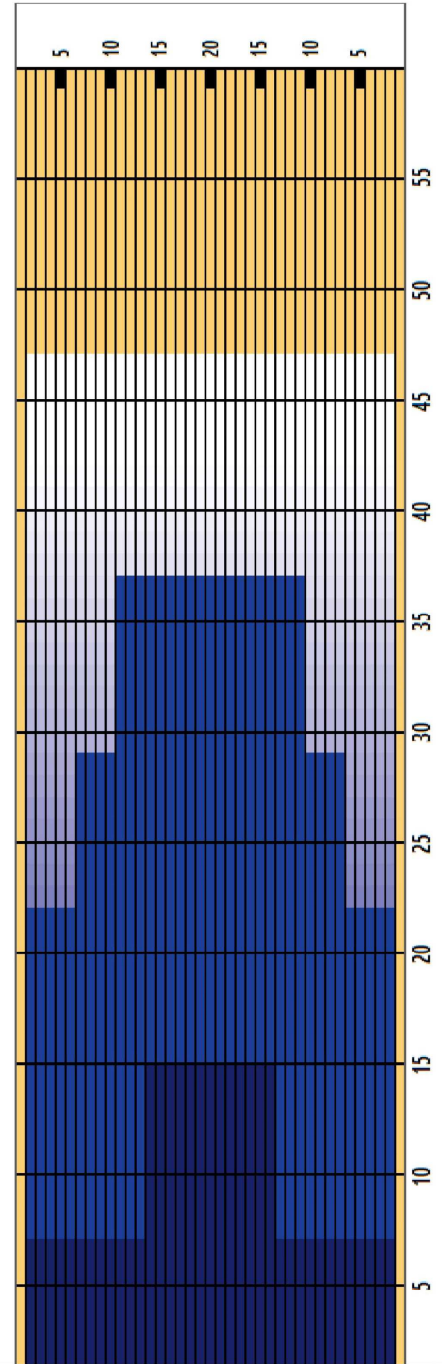
Item	3L-7L:18L-18R	8L-12L:18L-18R	13L-17L:18L-18R	18L-18R:17R-13R	18L-18R:12R-8R	18L-18R:7R-3R
Description	Outside:Middle	Middle:Middle	Inside:Middle	Middle: Inside	Middle:Middle	Middle:Outside
Track Zone Ratio	2.5	1.32	1	1	1.32	2.91



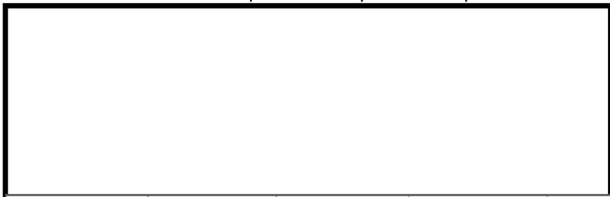
Oil Pattern Distance	47	Reverse Brush Drop	40	Oil Per Board	50 ul
Forward Oil Total	11.2 mL	Reverse Oil Total	18 mL	Volume Oil Total	29.2 mL
Tank Configuration	Only B	Tank A Conditioner	ICE	Tank B Conditioner	FIRE

	START	STOP	LOADS	SPEED	BUFFER	CROSSED	START	END	FEET	T.OIL
1	2L	2R	5	14	3	185	0.0	7.9	7.9	9250
2	14L	14R	3	18	3	39	7.9	15.5	7.6	1950
3	2L	2R	0	18	3	0	15.5	36.0	20.5	0
4	2L	2R	0	22	3	0	36.0	41.0	5.0	0
5	2L	2R	0	22	3	0	41.0	47.0	6.0	0

	START	STOP	LOADS	SPEED	BUFFER	CROSSED	START	END	FEET	T.OIL
1	2L	2R	0	26	3	0	47.0	37.0	-10.0	0
2	11L	11R	3	18	3	57	37.0	29.4	-7.6	2850
3	7L	7R	3	18	3	81	29.4	21.8	-7.6	4050
4	2L	2R	6	18	3	222	21.8	6.5	-15.3	11100
5	2L	2R	0	14	3	0	6.5	0.0	-6.5	0



Cleaner Ratio Main Mix NA Forward
 Cleaner Ratio Back End Mix NA Reverse
 Cleaner Ratio Back End Distance NA Combined
 Buffer RPM: 4 = 700 | 3 = 500 | 2 = 200 | 1 = 100



Item	3L-7L:18L-18R	8L-12L:18L-18R	13L-17L:18L-18R	18L-18R:17R-13R	18L-18R:12R-8R	18L-18R:7R-3R
Description	Outside:Middle	Middle:Middle	Inside:Middle	Middle: Inside	Middle:Middle	Middle:Outside
Track Zone Ratio	1.72	1.32	1.03	1.03	1.32	1.72

